



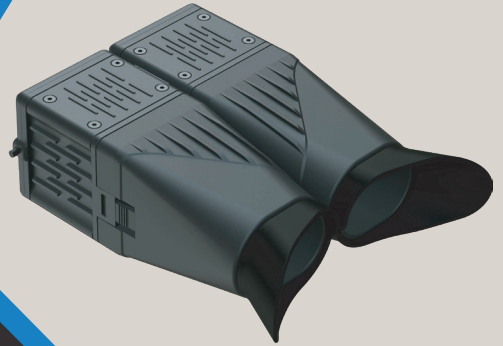
PT. MTIX TEKNOLOGI INDONESIA

Dual IRIS Scanner

M-EYE

Benefits

- Portable
- Robust
- Easy-to-operate
- Durable
- Highly Reliable



Features

Adjustable Inter Pupillary
Distance

Unaffected by Ambient
Lighting

Dust & Water
Resistant

Compliance to EYE Safety
Standards

Compliant with ANSI NIST
& ISO Image Interchange
Format

Supports Linux
Operating Systems

Supports Windows
Operating Systems

PT MTIX TEKNOLOGI INDONESIA

South Quarter Tower A 18th floor. Jl R.A. Kartini Kav 8, Cilandak Barat, Cilandak, Jakarta Selatan, 12430

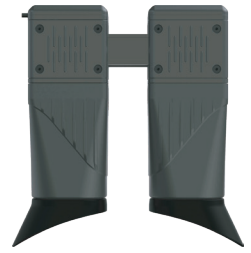
✉ sales@mtix.co.id

🌐 <http://www.mtix.co.id>

Dual IRIS Scanner

M-EYE

M-EYE is a rugged, portable and easy-to-use dual-iris capture device that can simultaneously capture both irises with higher accuracy and greater speed. The innovative dual iris scanner is packed with compelling features that make the device suitable for diverse biometric enrollment and identification applications.



At a Glance

IRIS Sensor

| Parameters | Specification |
|------------------------|---|
| Simultaneous Capture | : Dual IRIS Capture |
| IRIS Diameter | : > 210 Pixel |
| Spatial Resolution | : > 60 % @ 4.0 LP/mm |
| Pixel Resolution | : > 20 Pixel/mm |
| Image Margins | : Left & Right $\geq 0.5x$ IRIS Diameter, Top & Bottom $\geq 0.25x$ IRIS Diameter |
| Pixel Depth | : 8 Bits/Pixel (256 Gray Level) |
| Imaging Wavelength | : 700 - 900 nm |
| Frame Rate | : ≥ 10 Frames/Sec |
| Scan Type | : Progressive |
| Sensor SNR | : > 36 dB |
| Capture Mode | : Auto Capture with Built-in Quality Check |
| Illumination | : Near Infra Red (NIR) |
| Capture Distance | : > 100mm from the Front of Camera mirror |
| Capture Volume (WxHxD) | : 30 x 22.5 x 15 mm |
| Exposure Time | : < 33ms |

Hardware

| Parameters | Specification |
|-----------------------|--|
| Interface | : USB2.0 High Speed (USB-IF Certified) |
| Operating Voltage | : 5V +/- 5% |
| Current Consumption | : Operating :- < 375 mA (Max) , Stand By :- < 160 mA (Max) |
| Operating Temperature | : 0 to 50 °C |
| Operating Humidity | : 10-90% RH, Non-Condensing |
| ESD Protection | : +/-4kV (Contact Discharge), +/-8kV (Air Discharge) |
| Device Dimension | : 185 x 145 x 62 mm |
| Device Weight | : 0.41Kg |

Platform

| Parameters | Specification |
|------------------|------------------------------|
| Operating System | : Windows x86 and x64, Linux |

Certifications

| Parameters | Specification |
|-----------------------------------|---|
| Biometric Data Interchange Format | : ISO 19794-6 for IRIS Image, ISO 29794-6 for image quality |
| EMI / EMC Compliance | : CE & FCC Part 15B class B |
| Environmental, Health and Safety | : ROHS |
| Safety | : Exempt Group per IEC 62471:2006-07, IS13252 (Part 1) |
| Ingress Protection Rating | : IP65 |
| Device Driver | : WHQL Certified |

PT MTIX TEKNOLOGI INDONESIA

South Quarter Tower A 18th floor. Jl R.A. Kartini Kav 8, Cilandak Barat, Cilandak, Jakarta Selatan, 12430

✉ sales@mtxix.co.id

🌐 <http://www.mtxix.co.id>